

'Ewa 'Āina Education Initiative

Unit Plan: Loko Pā'āiau (Link: https://drive.google.com/file/d/1oMcMc12CD5nvhpR_reAlqipPrv9raOgq/view?usp=sharing)

Created by: Traci Kobayashi

'Ewa 'Āina Site: Loko Pā'āiau

Detailed Lesson-Project Plan #1

Descriptive Lesson Title: Ahupua'a and Mo'olelo

Essential Unit Questions Addressed

What is an ahupua'a?

Which ahupua'a do you belong to?

What is the importance of an ahupua'a?

Educational Standards

CCSS.ELA-LITERACY.CCRA.W.7

Conduct short as well as more sustained research projects based on focused questions, demonstrating understanding of the subject under investigation.

CCSS.ELA-LITERACY.CCRA.W.8

Gather relevant information from multiple print and digital sources, assess the credibility and accuracy of each source, and integrate the information while avoiding plagiarism.

CCSS.ELA-LITERACY.CCRA.W.9

Draw evidence from literary or informational texts to support analysis, reflection, and research.

HĀ framework and/or Hawaiian Culture integrated into this lesson

- Strengthened Sense of Belonging (Ahupua'a)
- Strengthened Sense of Hawai'i

Materials needed

Videos, Media, Lesson Presentations/Resources

- 'Ewa Region Video (Link: <https://www.ewaaained.org/ewa-region>)
 - Hālau o Pu'uloa Community-Ahupua'a (Link: https://www.ksbe.edu/assets/site/special_section/regions/ewa/Halau_o_Puuloa_Full-Ewa-Aina-Inventory.pdf)
 - Maps-p.16,17,19
- Hawai'i History website on ahupua'a (Link: <http://www.hawaiihistory.org/index.cfm?fuseaction=ig.page&CategoryID=299>)

Student Assessments & Worksheets

- 'Ewa Region Ahupua'a Map (Link: <https://drive.google.com/file/d/1w6L-hhDFiPhW9tKuuj0AR4XehT1DtocF/view?usp=sharing>)
- Daily Work: [Crossword puzzle](#) (Link: [https://www.ksbe.edu/assets/site/special_section/regions/ewa/Halau_o_Puuloa_Full-Ewa-Aina-Inventory.pdf](#))

<https://drive.google.com/file/d/1zpvP6YGA3t58lCjgCYK9aU5xDBchZ7KI/view?usp=sharing>) related to Hawaii History website on ahupua'a

- [Crossword puzzle answer key](https://drive.google.com/file/d/1kb0ood7Exxzv9yohhSHXblg3m4nlijH/view?usp=sharing) (Link: <https://drive.google.com/file/d/1kb0ood7Exxzv9yohhSHXblg3m4nlijH/view?usp=sharing>)

Supplies

- Chart paper (for KWL)
- Markers (for KWL)
- Print out of 'Ewa Region Ahupua'a Map
- Notepaper
- Pen/pencil

Pedagogy (methods) Used to introduce, teach and close/review lesson

Lesson Introduction

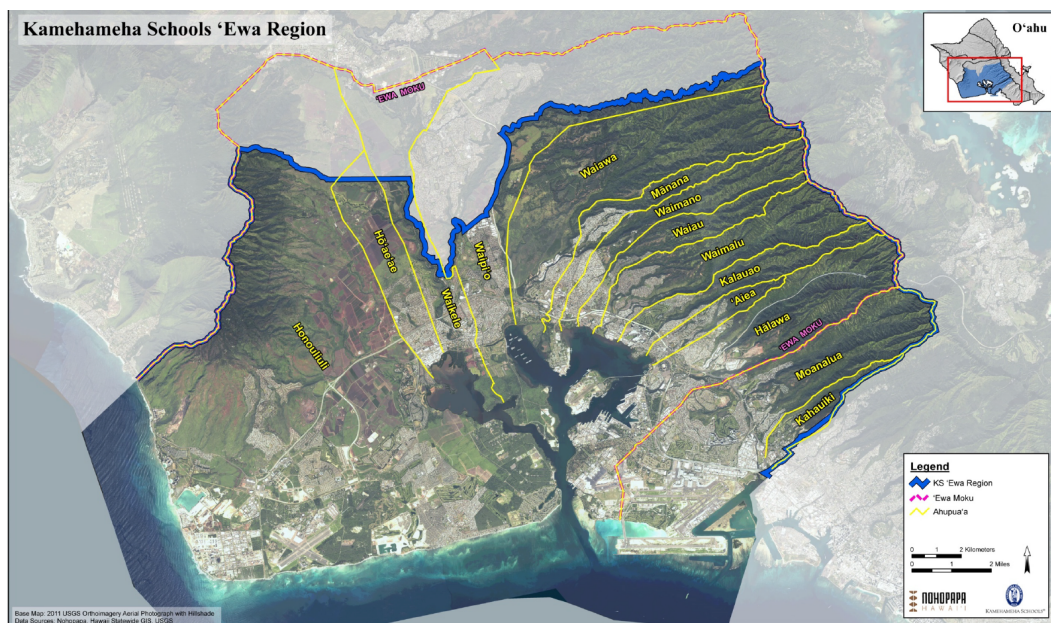
Students will watch '**Ewa Region Video** created by Kamehameha Schools introducing the environmental and cultural significance of the 'Ewa moku.

Instructional Sequence

Teacher will...	Students will...
Create K-W-L on chart paper and display on board. Introduce 'Ewa Region K-W-L (What I K now, What I W onder, What I L earned) activity and fill out K and W sections with class.	Share what they already know and wonder about the 'Ewa region.
Play ' Ewa Region Video .	Watch the video.
Students can read about ahupua'a using Hawai'i History Website on Ahupua'a .	Read the Hawai'i History website about ahupua'a.
Demonstrate how to use google maps.	Take notes on demonstrations of google maps.
Daily Work: Which ahupua'a do you belong to? If students don't live in the 'Ewa region, have students locate Pearl City High School?	Use google maps to find where they live and then locate which ahupua'a they belong to.
Daily Work: Have students complete Crossword puzzle using Hawai'i History Website on Ahupua'a using the Answer Key .	Complete Crossword puzzle.
Optional Scavenger Hunt: Look for ahupua'a signs around the community. <ul style="list-style-type: none"> • Moanalua Road and Ho'olaule'a Street 	Find the locations of the ahupua'a signs in the 'Ewa region and mark it on the ' Ewa Region Ahupua'a map .

Closure

Fill out the L section (What I Learned) on the K-W-L chart.
Show the 'Ewa 'Aina Region and the ahupua'a.



Students will use google maps to find their respective ahupua'a. Place a star on the 'Ewa Region ahupua'a map (above).

Scavenger Hunt: Find the different ahupua'a signs in the 'Ewa 'Āina Region.

Accommodations for at least 3 types of diverse learners

- ELL students have definitions of Hawaiian words
 - **Ahupua'a**: land division, usually extending from the uplands to the sea
 - **`Ewa**: translates as "**crooked**" or "**ill-fitting**" in Hawaiian. The name comes from the myth that the gods Kāne and Kanaloa threw a stone to determine the boundaries, but it was lost and later found at Pili o Kahe.
 - **`Ewa**: a popular substitute for "**west**" or "**west bound**" when traveling on O'ahu mostly because of its size. While Wai'anae is the farthest west land division, saying "'Ewa bound" encompasses so many more towns and cities outside and west of Honolulu.
 - **`Āina**: translates as "**land**," but its meaning goes much deeper than a simple definition. To really understand all the layers of meaning of the word, you also need to understand the unique relationship that native Hawaiians have with the land.
- Kinesthetic learners we could take a walk down to Moanalua Road to see an ahupua'a sign
- Students without internet access print out a google map of where they live and the ahupua'a map.
- The lesson plan is suitable for distance learning.
 - Can share answers via Jamboard or Padlet.

Suggested Formative Assessment Method/s For This Lesson

Students will complete the 'Ewa Region Ahupua'a Map worksheet to check for their understanding of which ahupua'a they belong to. Students will also complete a Hawaiian crossword puzzle on the land division.

Explain How This Lesson Relates To the Unit Summative Assessment

Students will learn about the different ahupua'a in the 'Ewa Region. They will learn which ahupua'a they belong to. Students will build a sense of belonging to their ahupua'a and Hawai'i. Which in turn will build their sense of HĀ and make it their kuleana to become better community contributors.